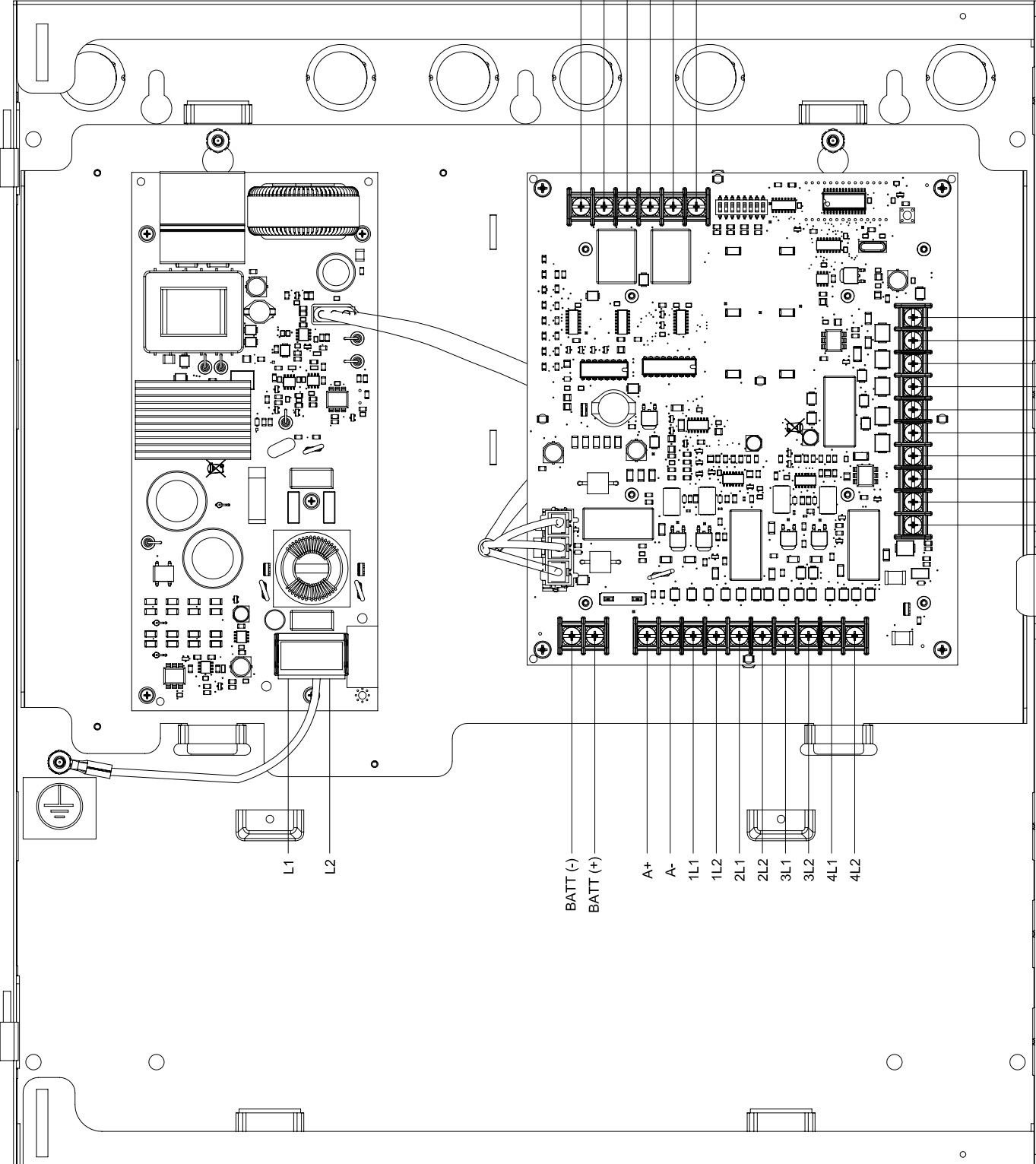


AC FAIL (N/C) ————— TROUBLE (N/O)
 AC FAIL (COMM) ————— TROUBLE (COMM)
 AC FAIL (N/O) ————— TROUBLE (N/C)



REF (+)
 REF (-)
 SIGNAL 1 (+IN)
 SIGNAL 1 (-IN)
 SIGNAL 1 (+OUT)
 SIGNAL 1 (-OUT)
 SIGNAL 2 (+IN)
 SIGNAL 2 (-IN)
 SIGNAL 2 (+OUT)
 SIGNAL 2 (-OUT)

BATT (-)
 BATT (+)
 A+
 A-
 1L1
 1L2
 2L1
 2L2
 3L1
 3L2
 4L1
 4L2

L1
 L2